



15W (1/50 HP)

REVERSIBLE MOTORS Frame size 70mm sq. (2.76 in. sq.)

Single-Phase

LEAD WIRE TYPE

SPECIFICATIONS

CONTINUOUS DUTY, INSULATION CLASS A or E, 4POLES

Model	Output		Voltage (V)	Frequency (Hz)	Rated						Starting Torque			Capacitor (μ F)
	(HP)	(W)			Input (W)	Current (A)	Torque			Speed (rpm)	(kg-cm)	(N-m)	(oz-in)	
							(kg-cm)	(N-m)	(oz-in)					
L7R15□C	1/50	15	1 \emptyset 100	50	50	0.46	1.22	0.120	16.94	1200	1	0.098	13.89	7
L7R15□D	1/50	15	1 \emptyset 200	50	50	0.23	1.22	0.120	16.94	1200	1.1	0.108	15.28	2
L7R15□B	1/50	15	1 \emptyset 220	60	50	0.23	0.95	0.093	13.19	1550	1.15	0.113	15.97	1.5
L7R15□E	1/50	15	1 \emptyset 115	60	50	0.50	0.95	0.093	13.19	1550	1.15	0.113	15.97	6
L7R15□X	1/50	15	1 \emptyset 220~240	50	55	0.24	1.17	0.115	16.25	1250	1.2	0.118	16.66	1.8

* Model in grey screen represents the motors with THERMALLY PROTECTED according to UL regulation.

* Model in dark grey screen represents the motors with THERMALLY PROTECTED according to CE regulation.

* In case of some models certificated for export, the special cord like CE or UL is added after the existing model no. ex) L9160□XH-CE, L9160□EH-UL.

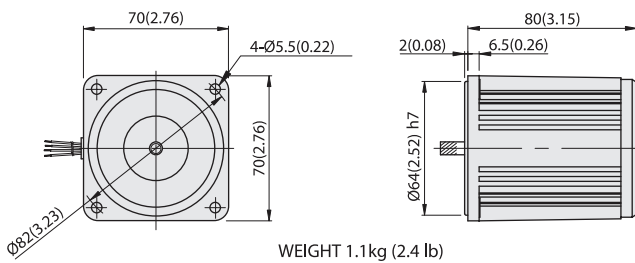
* Insulation class for motors which acquired certificates for export is B.

REVERSIBLE MOTORS

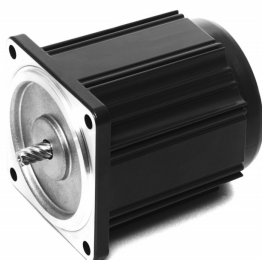
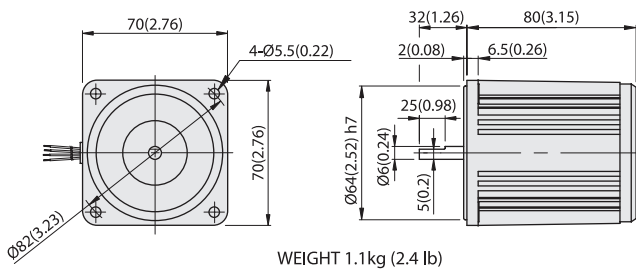
DIMENSIONS

L7R15P□L

Unit : mm(inch)

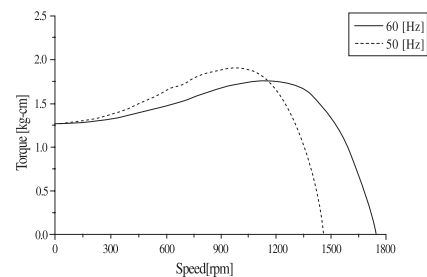


L7R15D□



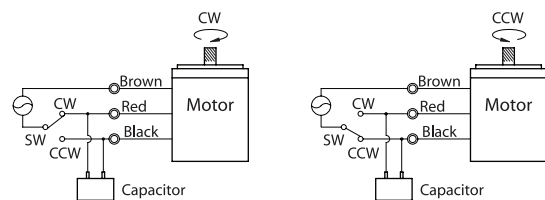
SPEED-TORQUE CURVE

Single phase L7R15□□



CONNECTION DIAGRAMS

Standard or with T.P



The direction of rotation is seen from the end of motor shaft.